

### Specifications

MODEL	Z-60/37DC	
Measurements	US	Metric
Working height maximum*	65 ft 7 in	20.16 m
Platform height maximum	59 ft 7 in	18.16 m
Horizontal reach maximum	36 ft 7 in	11.15 m
Up and over clearance maximum	24 ft 3 in	
<b>A</b> Platform length - 8 ft / 6 ft model	3 ft / 2 ft 6 in	0.91 m / 0.76 m
<b>B</b> Platform width - 8 ft / 6 ft model	8 ft / 6 ft	2.44 m / 1.83 m
<b>C</b> Height - stowed	8 ft 4 in	2.54 m
Transport Height - stowed (jib tucked under)	8 ft 7 in	2.62 m
<b>D</b> Length - stowed	26 ft 9 in	8.15 m
Transport Length-Stowed (jib tucked under)	20 ft 8 in	6.3 m
<b>E</b> Width	8 ft 2 in	2.49 m
<b>F</b> Wheelbase	8 ft 2 in	2.49 m
<b>G</b> Ground clearance - center	1 ft 1 in	0.33 m

### Productivity

Lift capacity	500 lb	227 kg
Platform rotation	160°	
Vertical jib rotation	135°	
Turntable rotation	355° non-continuous	
Turntable tailswing - riser up	1 ft 11 in	0.58 m
Turntable tailswing - riser down	2 ft 8 in	0.81 m
Drive speed - stowed	4.0 mph	6.44 km/h
Drive speed - raised**	0.68 mph	1.09 km/h
Gradeability - 4WD - stowed***	45%	45%
Turning radius - inside	8 ft 3 in	2.51 m
Turning radius - outside	18 ft 8 in	5.69 m
Controls	24V DC proportional	
Tires	355/55D625, 14 Ply	

### Power

Drive system	34 V 3-Phase AC
Power source	48 V DC (eight 6V batteries) 390 Ah capacity (FLA, standard on DC) 415 Ah capacity (AGM)
Auxiliary power unit	12 V DC
Hydraulic tank capacity	18 gal      68.14 L

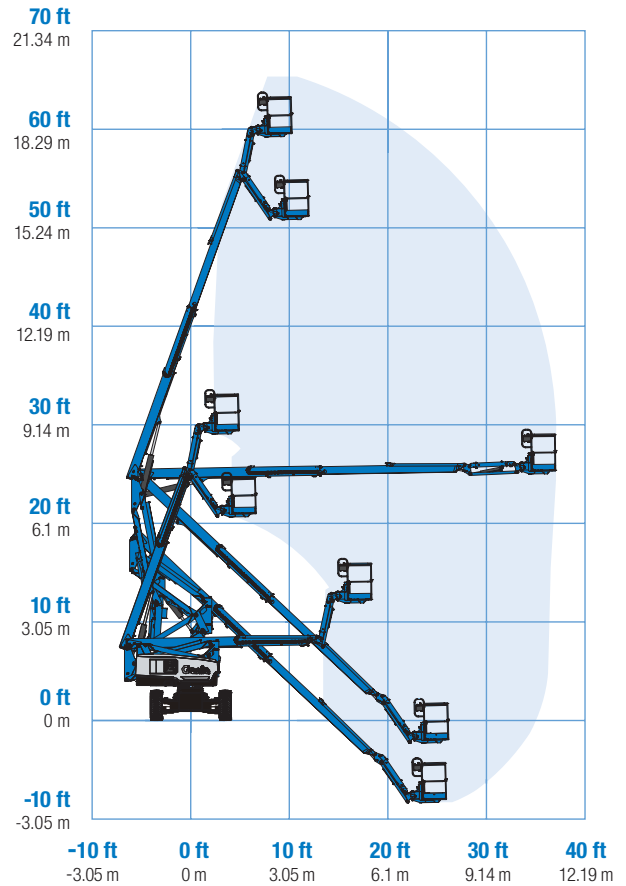
### Weight\*\*\*\*

Z-60/37DC	16,600 lb	7,530 kg
-----------	-----------	----------

### Standards Compliance

ANSI A92.5, CSA B354.4, EN 280, AS 1418.10

Range Of Motion Z-60/37DC



\* The metric equivalent of working height adds 2 m to platform height. U.S. adds 6 ft to platform height.

\*\* In lift mode (platform raised), the machine is designed to operate on firm, level surfaces only.

\*\*\* Gradeability applies to driving on slopes. See operators manual for details regarding slope ratings.

\*\*\*\* Weight will vary depending on options and/or country standards.

